



SunRise Solar-Powered Attic Fan

Remote Panel Unit

Installation Guide



P.O. Box 53
St. John, IN 46373
219-306-8163
219-306-4571 fax
www.SunRiseSolar.net

5yr motor warranty
10yrs all other parts

Solar Attic Fans.....made in the USA!

Available Models:
FB850RP, FB1050RP, FB1250RP
(including FB850RPFT, FB1050RPFT, FB1250RPFT)

- Detached solar panel for maximum sun exposure.
- For normal sloped, shingled roofs.
- Also works with flat concrete/slate tile roofs.

Made in the USA



INSTALLING THE FAN & SOLAR PANEL

IMPORTANT NOTE: The Remote Panel Solar Fan has a 15' ext cord, so fan housing must be within 15' of the solar panel – longer lengths available upon request.



A



B



C



D

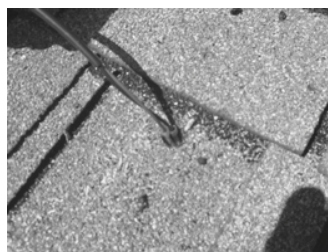
A: Unpack box **BEFORE** cutting template out. **B:** Between rafters, measure 24"-30" from roof peak to hole center. Mark inner and outer circles on shingles. **C:** Cut inner circle through roof. **D:** Trim shingles to outer circle, and remove nails to allow fan housing to slip under shingles.



E



F



G



H

E: Find south or west-facing roof to mount panel, and drill 3/8"-1/2" hole through roof. **F:** Connect ext cord to panel cord. **G:** Feed wire into attic. **H:** Seal hole.



I



J



K



L

I: Apply sealant to bottom edge of panel flange, tucking upper flange under shingles. **J:** Fasten panel to roof using 4-8 screws. **K:** Bring wire to fan opening. **L:** Secure wire to motor bracket with wire tie. Connect wires to motor.



M



N



O



P

M: Slide fan under shingles. **N:** Center fan over hole. **O:** Screw fan base to roof. **P:** Installation complete - The Sun's **FREE** power is now cooling your attic!

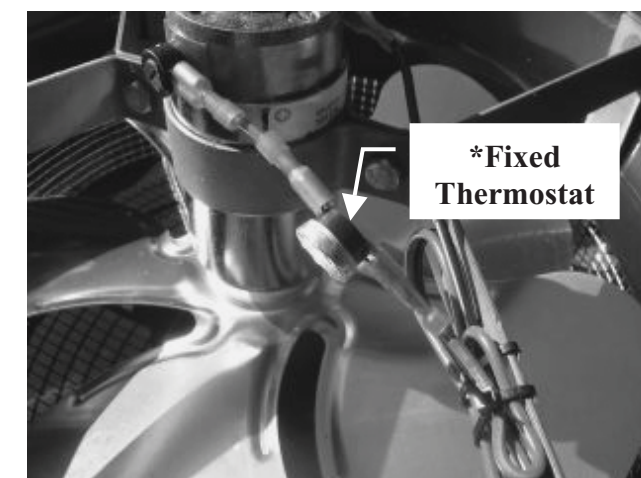


*** THIS PAGE APPLIES ONLY TO MODELS WITH A FIXED THERMOSTAT**

Fixed Thermostat Information

This fan has been factory equipped with a thermal on/off switch. This switch is designed to turn the fan:

ON: 80° F
OFF: 65° F
(+/-7°)



Example: Attic temperature rises to 80° and fan turns on. Once it cools to 65° the fan will shut off. If evening comes and temp does not fall below 65° to reset the switch, then the unit will start the next morning at sunrise and continue to cool the attic. However, if the attic temp falls below 65° at night, then the switch will shut off and will not turn the unit on again until attic temp reaches 80°.

INSTALLER: THIS FAN WILL NOT RUN UNLESS THE AMBIENT (AIR) TEMPERATURE IS AT OR NEAR 80°. YOU MAY TEST OPERATION OF THE THERMOSTAT BY BLOWING WARM AIR DIRECTLY ON THE THERMOSTAT TO HEAT IT TO 80°, MAKING SURE SOLAR PANEL IS EXPOSED TO SUNLIGHT AT THE SAME TIME.

Solar Attic Fans.....made in the USA!